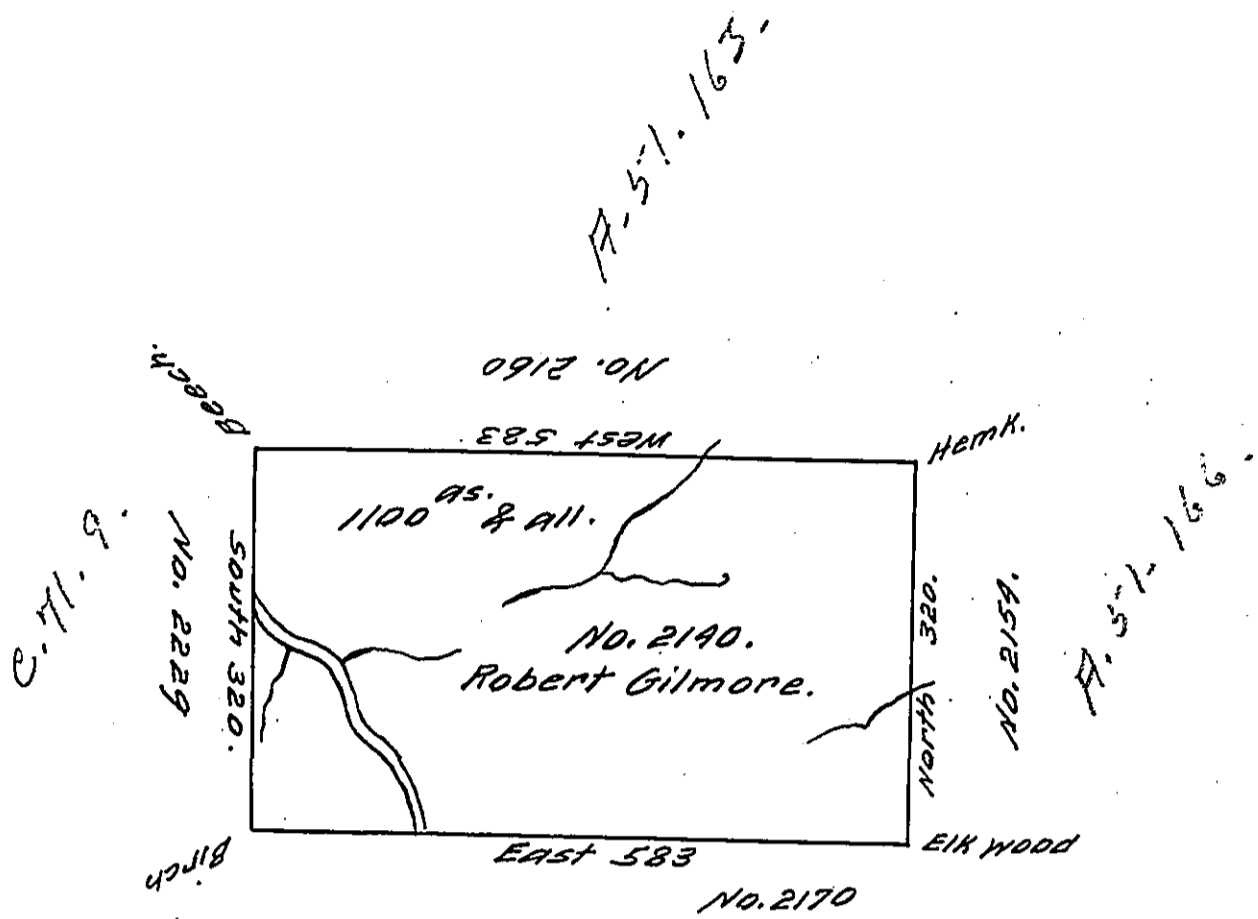


No. 61.



Situate on the waters of the Osage Creek about four miles west of the five mile tree on the East Line of this District in Northd County containing 1100 acres and the usual allowance for Roads &c.

Surveyed June 20th 1793 for Robert Gilmore in perseuance of a warrant No. 2140 bearing date 12th December 1792

Daniel Brodhead Esqr. S. G.

John Canan.

D. S.

IN TESTIMONY that the above is a copy of the original remaining on file in the Department of Internal Affairs of Pennsylvania, made conformably to an Act of Assembly approved the 16th day of February, 1833, I have hereunto set my Hand and caused the Seal of said Department to be affixed at Harrisburg, this seventh day of August 1911

Henry Howell
 Secretary of Internal Affairs.